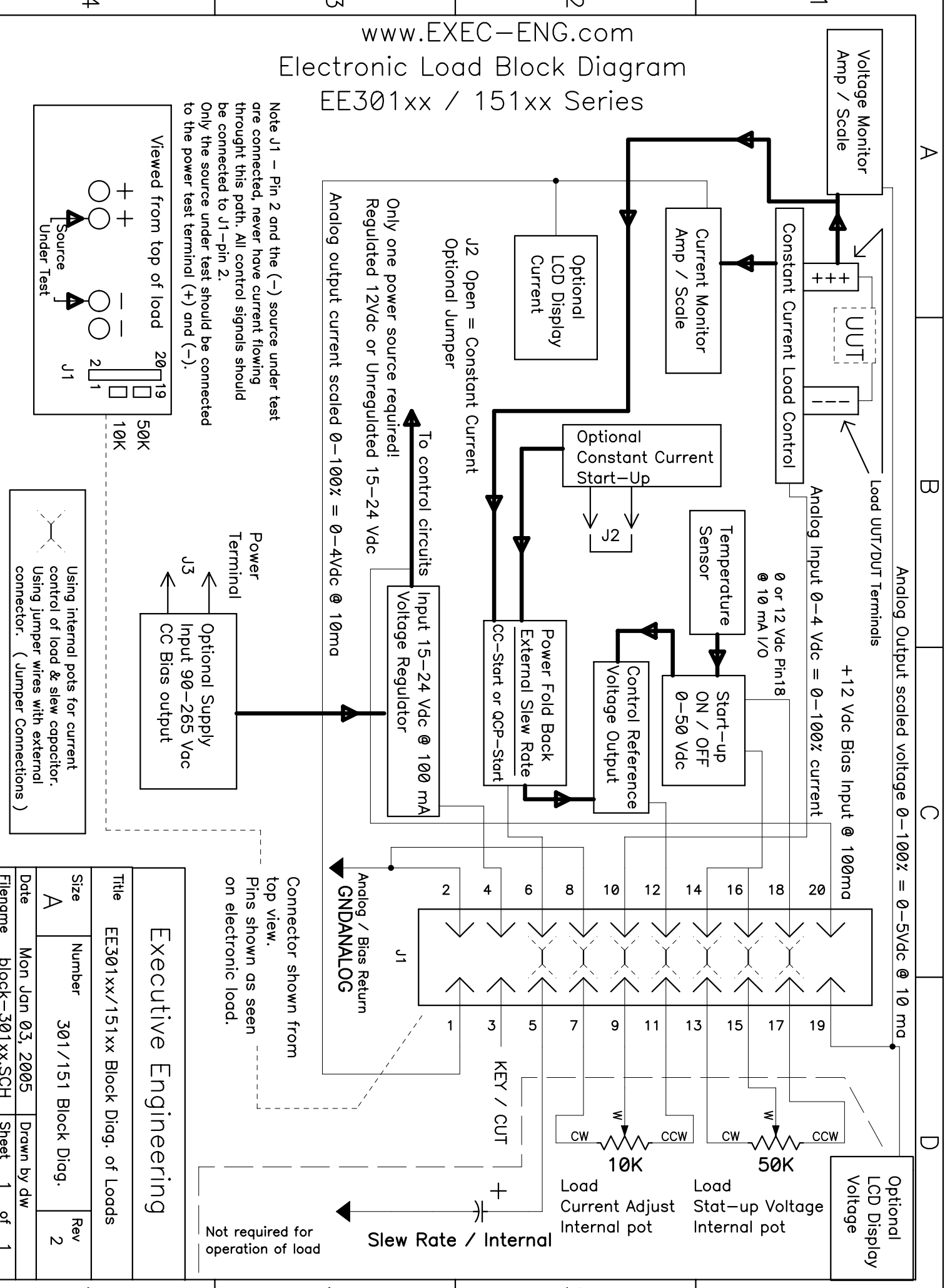


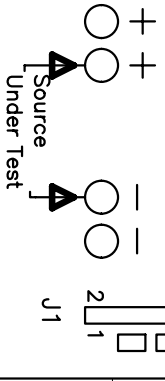
# Electronic Load Block Diagram

## EE301xx / 151xx Series

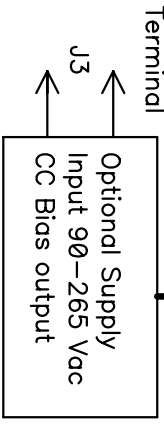


Note J1 - Pin 2 and the (-) source under test are connected, never have current flowing through this path. All control signals should be connected to J1-pin 2. Only the source under test should be connected to the power test terminal (+) and (-).

Viewed from top of load



Using internal pots for current control of load & slew capacitor. Using jumper wires with external connector. ( Jumper Connections )



Connector shown from top view. Pins shown as seen on electronic load.

### Executive Engineering

Title: EE301xx/151xx Block Diag. of Loads

Size	Number	Rev
A	301/151 Block Diag.	2

Date	Mon Jan 03, 2005	Drawn by	dw
Filename	block-301xx.SCH	Sheet	1 of 1