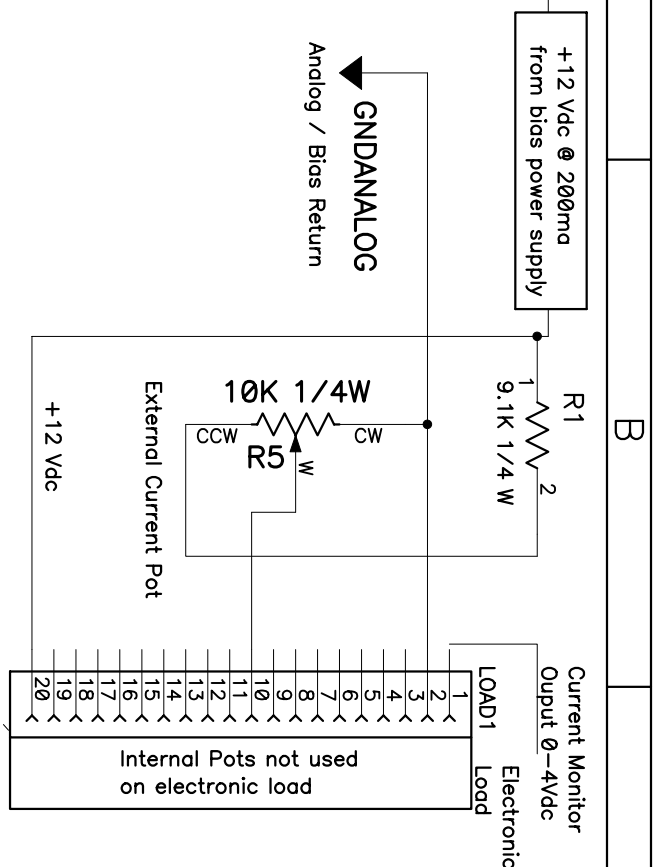
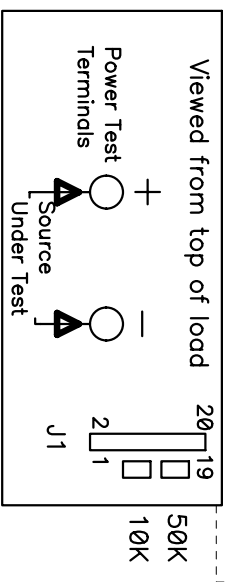
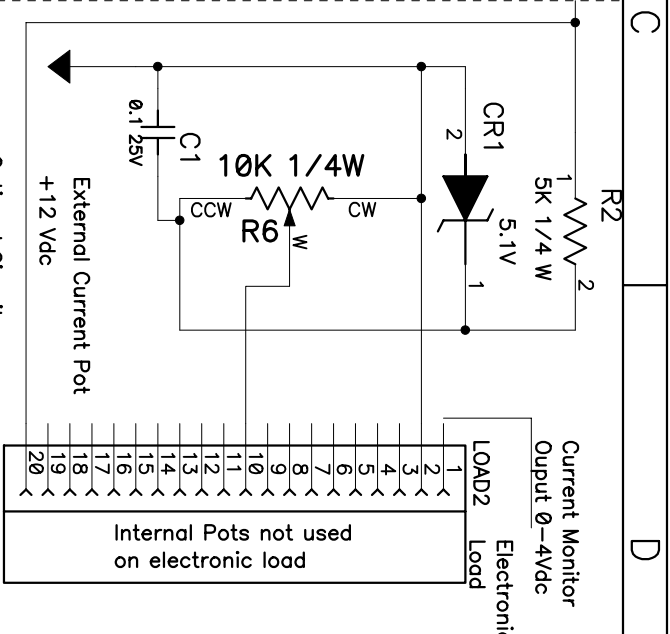
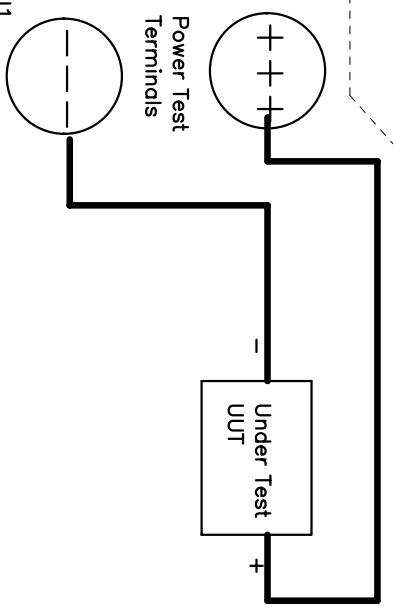


Connector shown from top view.
Pins shown as seen on electronic load.

Note J1 – Pin 2 and the (-) source under test are connected, never have current flowing through this path. All control signals should be connected to J1–pin 2. Only the source under test should be connected to the power test terminal (+) and (-).



Standard Circuit



Optional Circuit:

CR1 can be used to current limit the Electronic Loads. By adjust the voltage level of the zener you can limit the amount of current the load is able to sink.
Example: (CR1) 3.3V = about 30 amps for EE30140A
(CR1) 3.3V = about 60 amps for EE30180A
(CR1) 2.0 V = about 20 amps for EE30140A
(CR1) 2.0 V = about 40 amps for EE30180A

Note: You should never use a zener higher than 5.1 V

[Http://www.EXEC-ENG.com](http://www.EXEC-ENG.com)

Executive Engineering

Constant Current Operation with External Pot

Title		Constant Current +Remote Control Testing using pots	
Size	Number	Rev	

A	301/151 Remote Control	1	
---	------------------------	---	--

Date	Sun Sep 19, 2004	Drawn by	dw
Filename	CC-POT-TEST.SCH	Sheet	1 of 1